



Carrizo Springs CISD

Texas Academic Performance Report (TAPR) 2015-2016

Board Presentation
February 21, 2017

Ms. Sofia Morones, Director for Curriculum/
CTE/District Testing Coordinator



The district received the following

2016 Accountability Rating: Met Standard

2016 Special Education Determination Status:
Needs Assistance

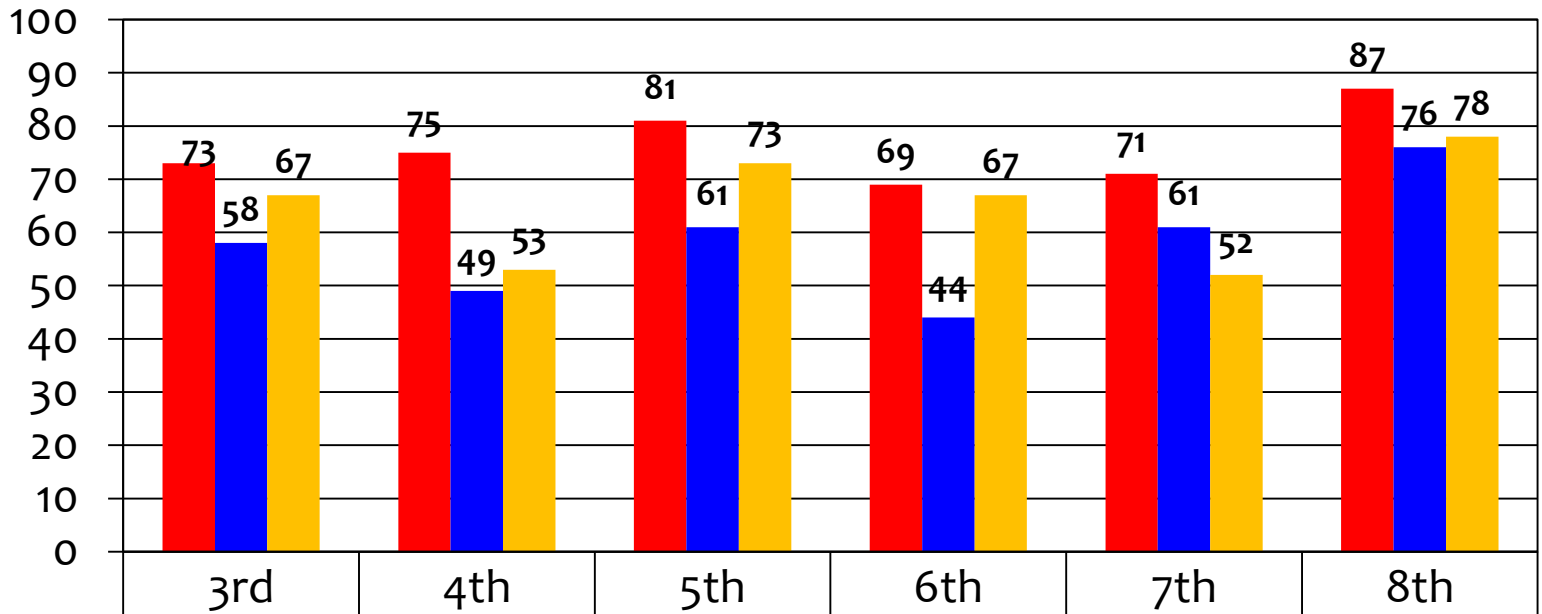
2015-2016 Accreditation Status: Accredited

Resource: Texas Education Agency

2015-2016 Accountability

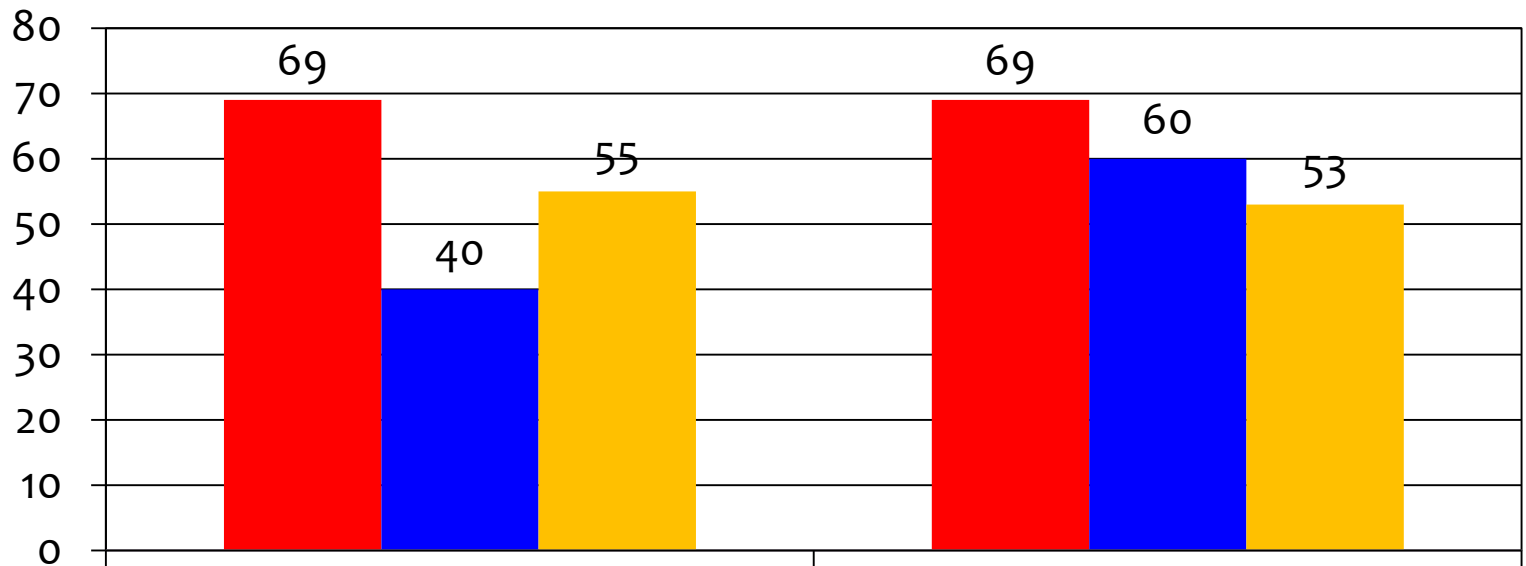
<u>Campus</u>	<u>Accountability</u>
CS High School	Met Standard
CS Jr. High School	Met Standard
CS Intermediate School	Improvement Required
CS Elementary School	Improvement Required
Asherton Elementary School (paired with CS Elem)	Improvement Required

STAAR – Reading State scores vs. CSCISD Scores



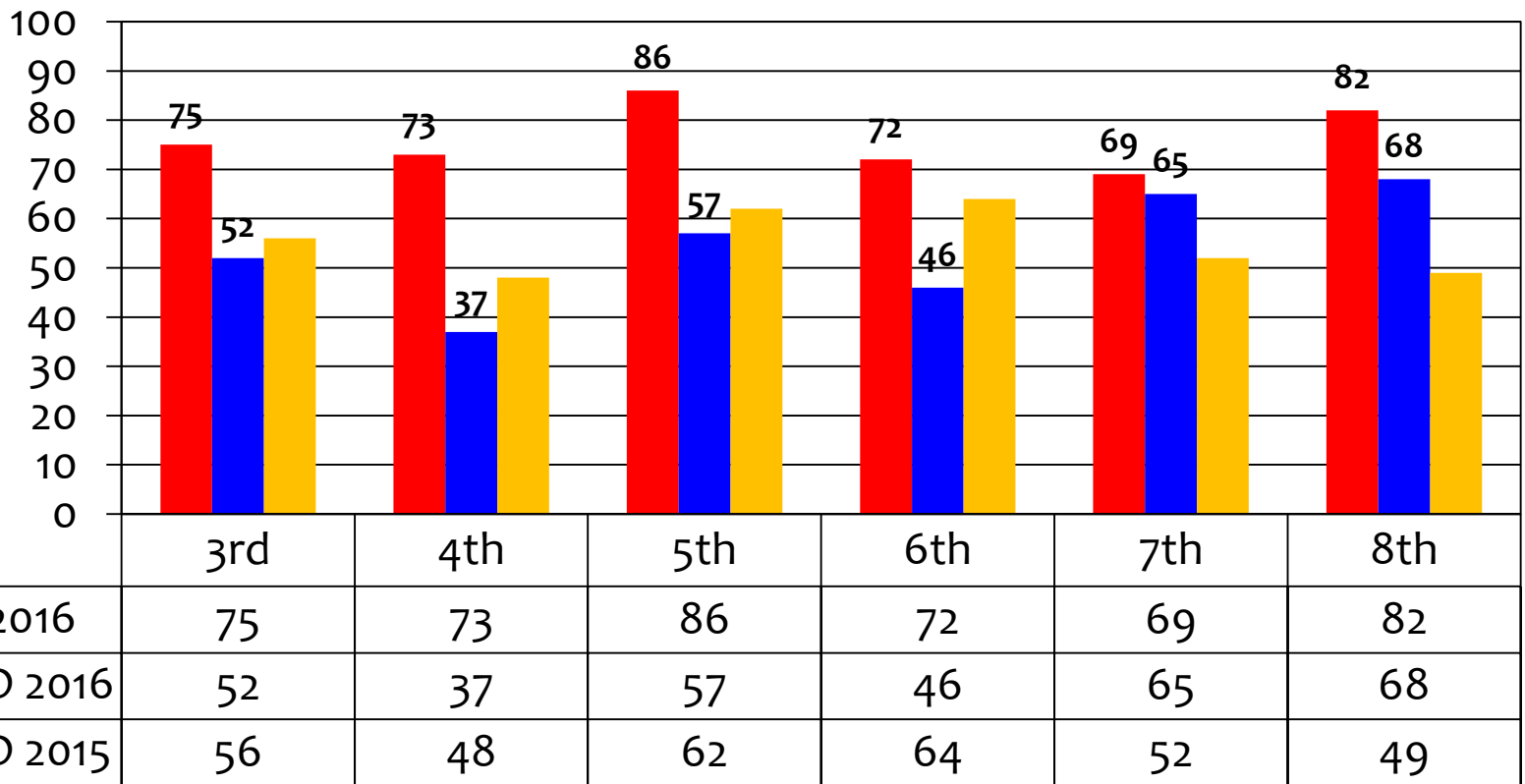
■ State 2016	73	75	81	69	71	87
■ CSCISD 2016	58	49	61	44	61	76
■ CSCISD 2015	67	53	73	67	52	78

STAAR – Writing State scores vs. CSCISD scores



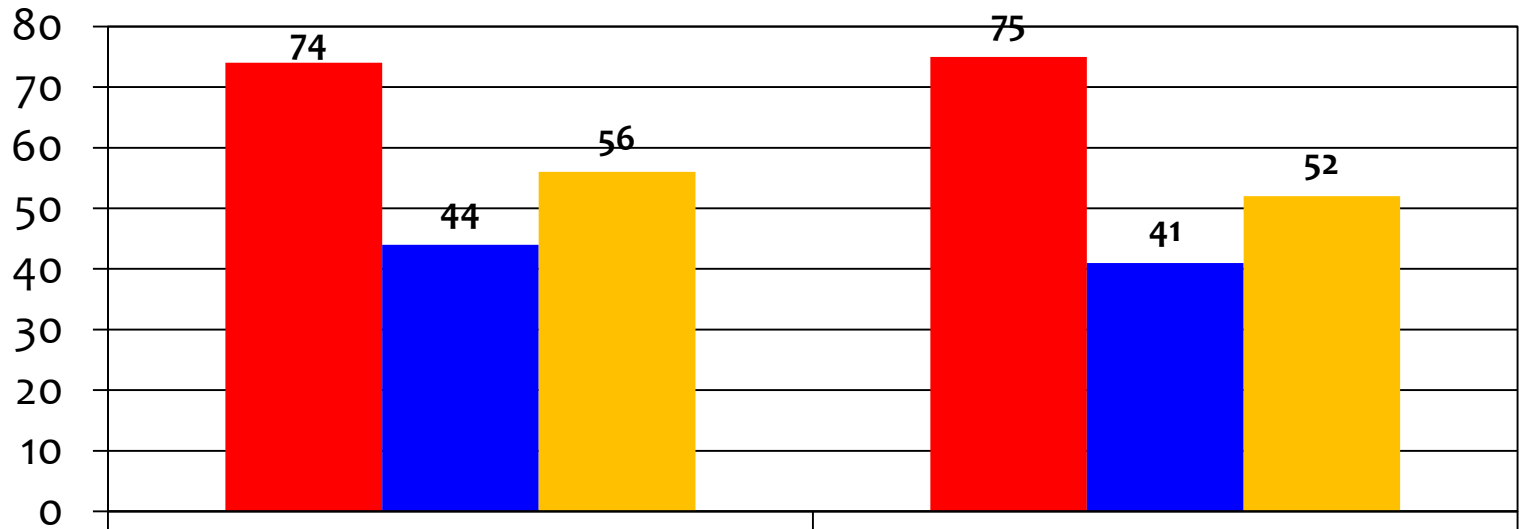
	4th	7th
■ State 2016	69	69
■ CSCISD 2016	40	60
■ CSCISD 2015	55	53

STAAR – Math State scores vs. CSCISD Scores



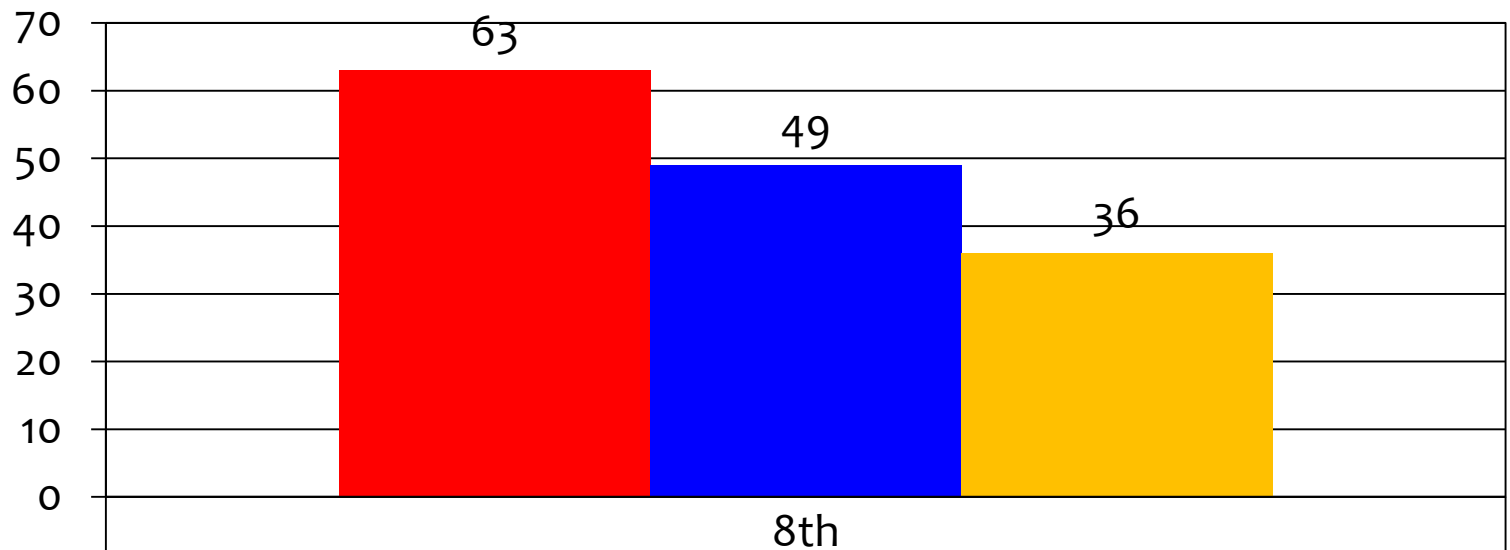
CSCISD 2015 - STAAR Gr 3-8 Math, STAAR A & STAAR Alternate 2 - These results are excluded from the 2014--2015 TAPR Report

STAAR – Science State scores vs. CSCISD scores



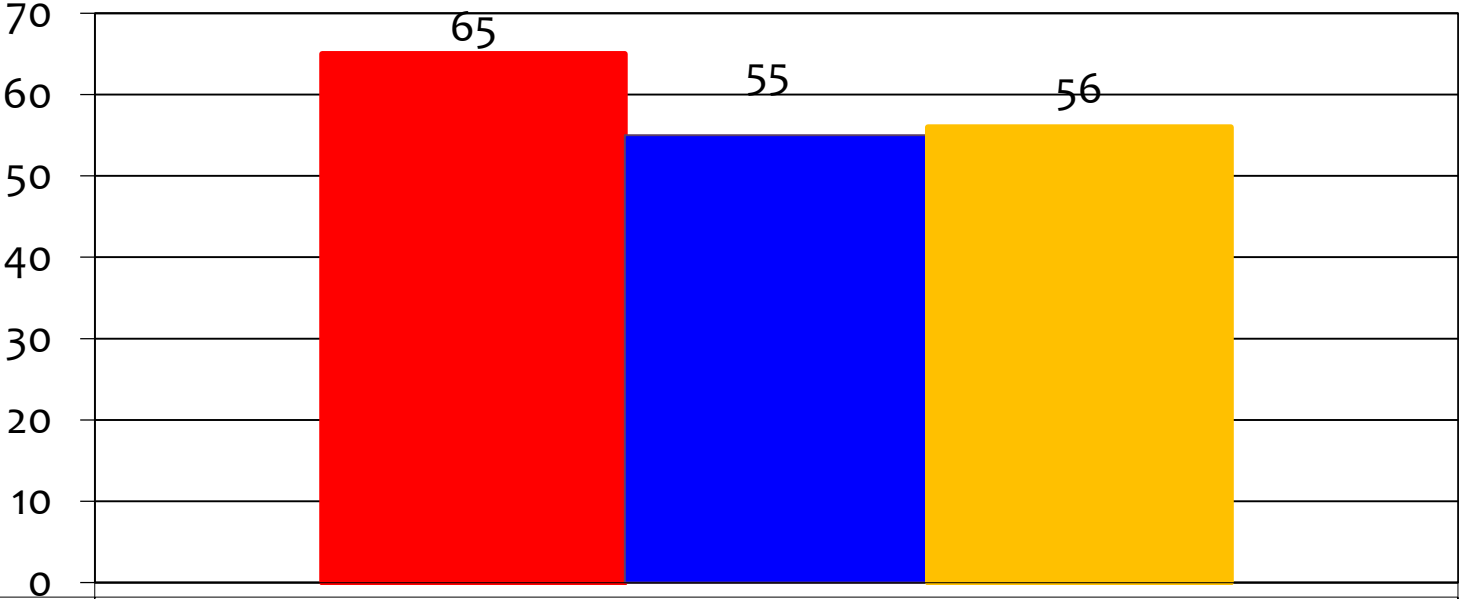
	5th	8th
■ State 2016	74	75
■ CSCISD 2016	44	41
■ CSCISD 2015	56	52

STAAR – Social Studies State scores vs. CSCISD scores



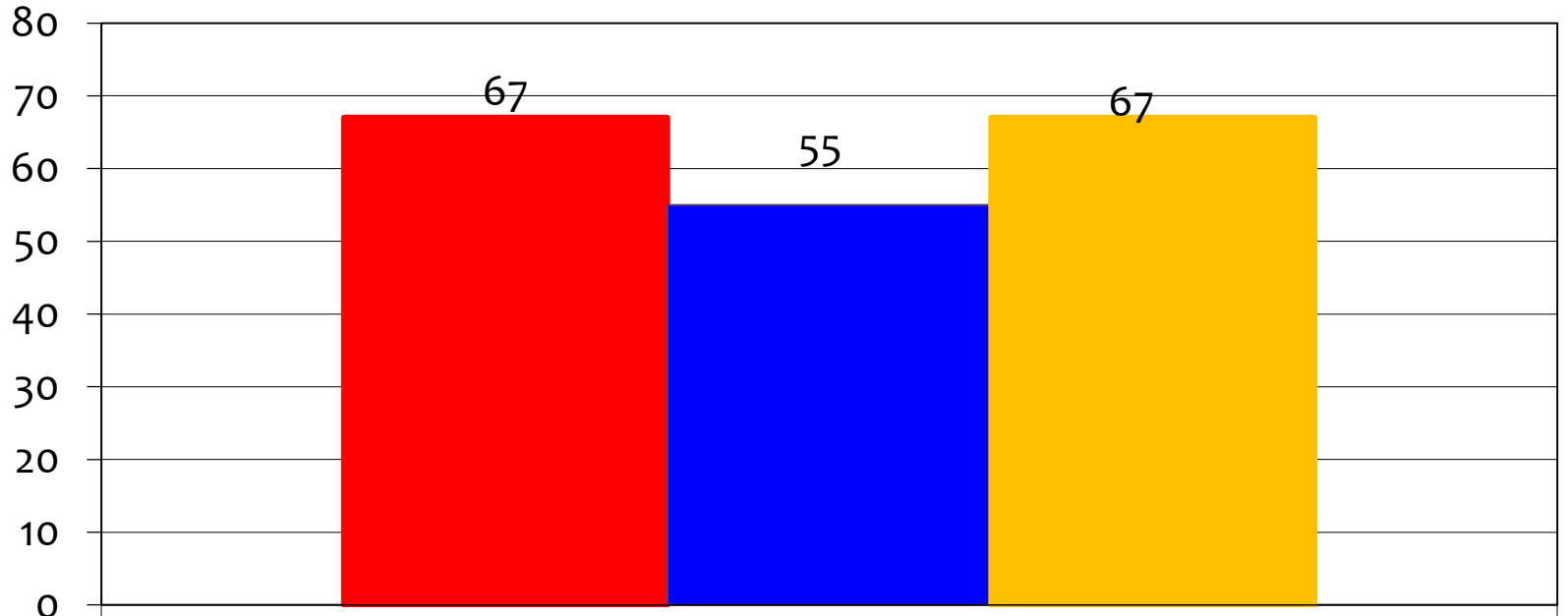
■ State 2016	63
■ CSCISD 2016	49
■ CSCISD 2015	36

EOC English I



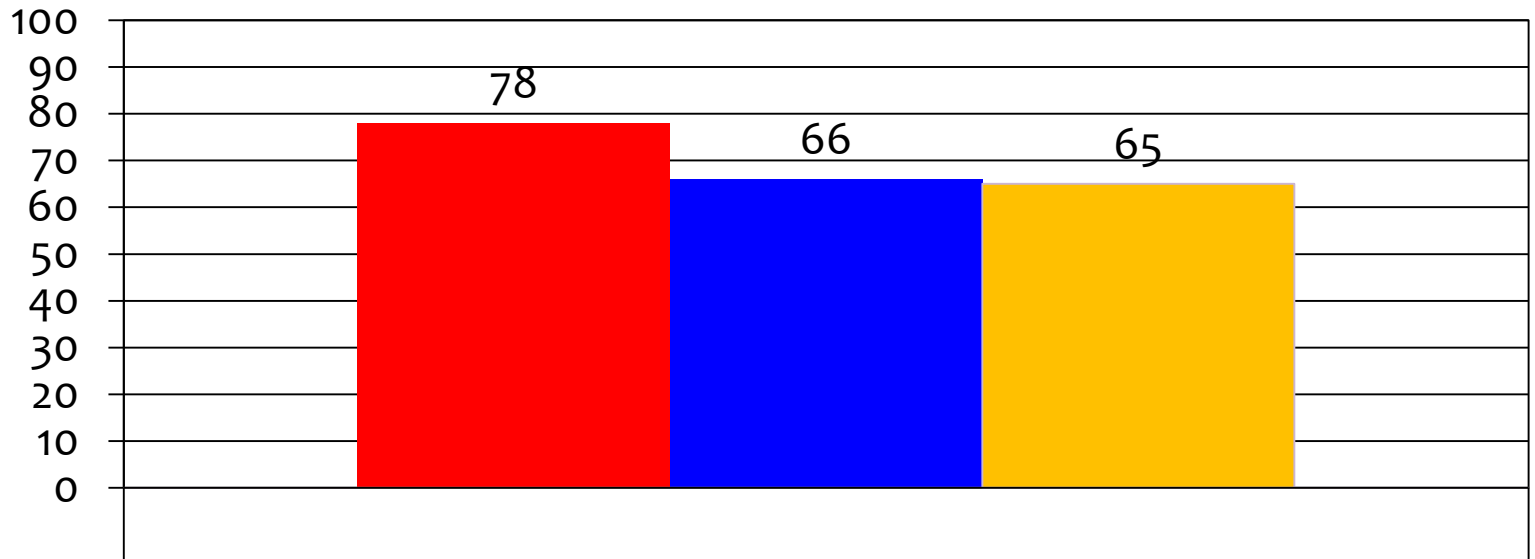
State 2016	65
CSCISD 2016	55
CSCISD 2016	56

EOC English II



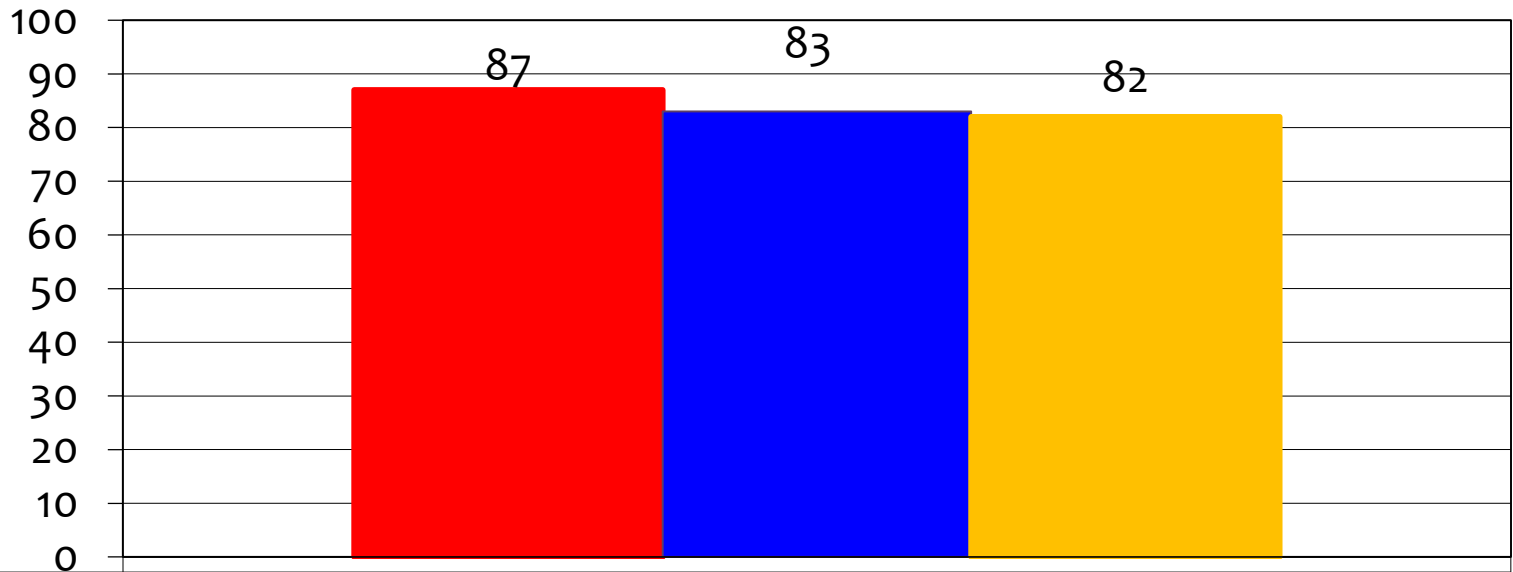
■ State 2016	67
■ CSCISD 2016	55
■ CSCISD 2015	67

EOC Math – Algebra I



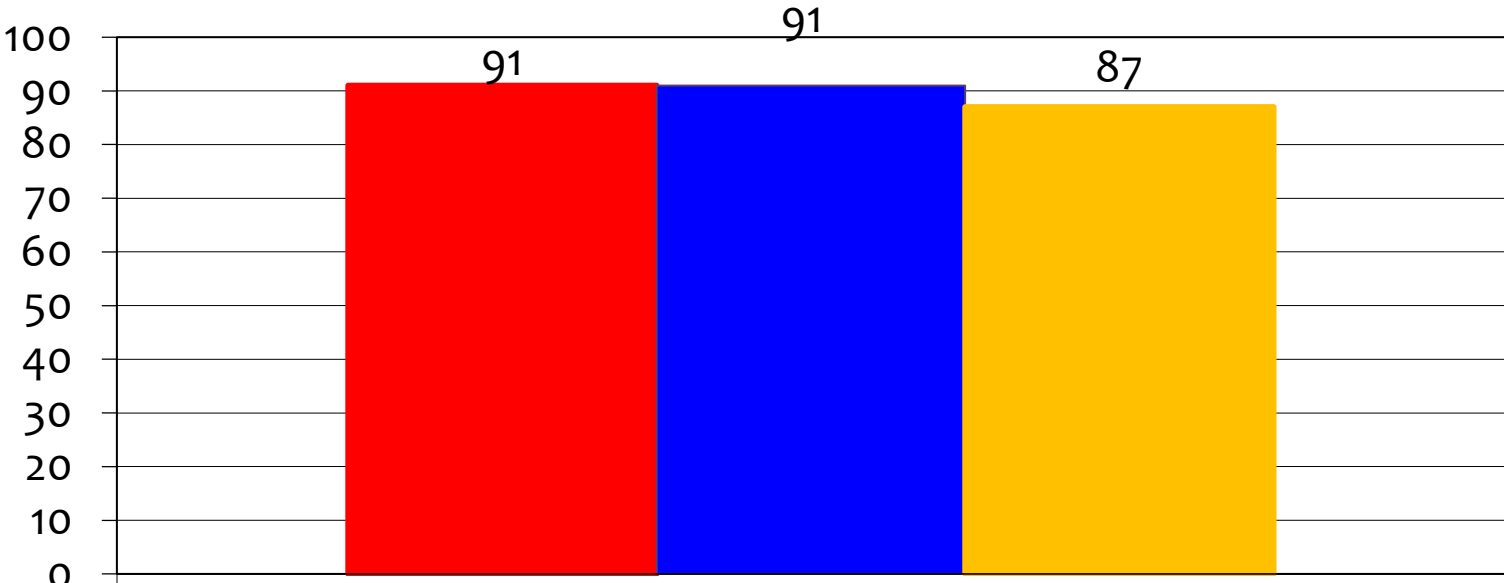
■ State 2016	78
■ CSCISD 2016	66
■ CSCISD 2015	65

EOC Science - Biology



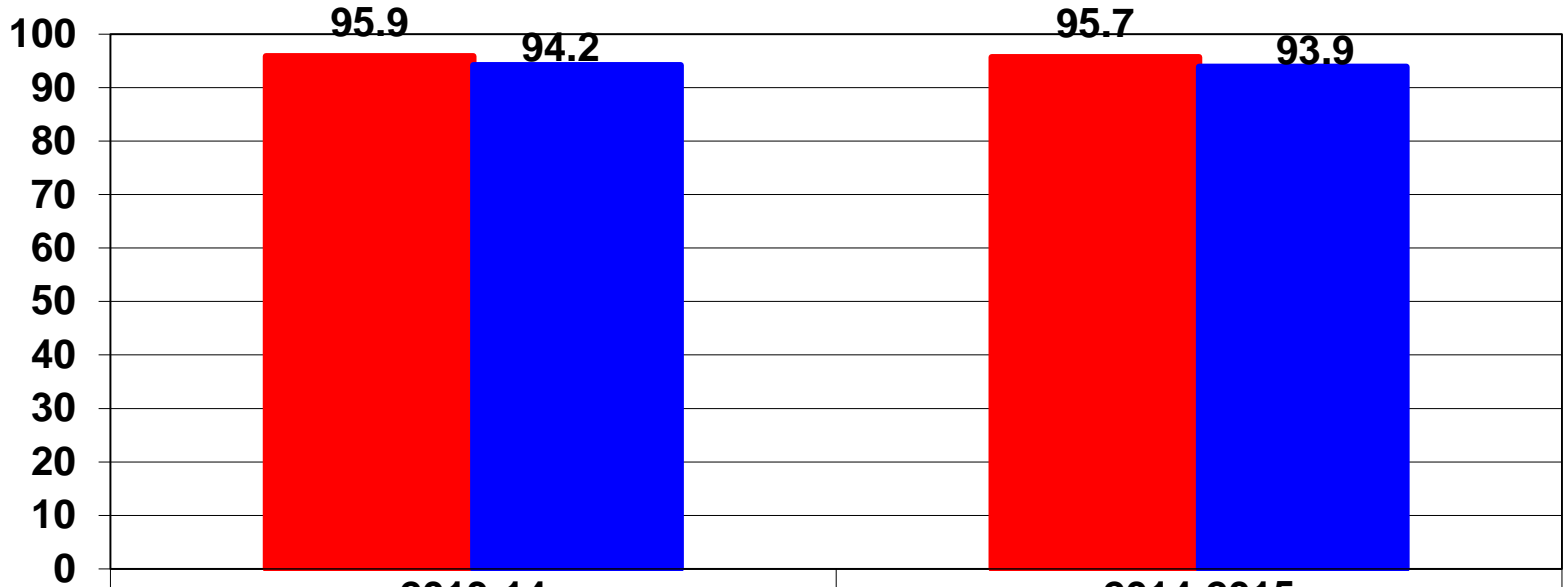
State 2016	87
CSCISD 2016	83
CSCISD 2015	82

EOC Social Studies – US History



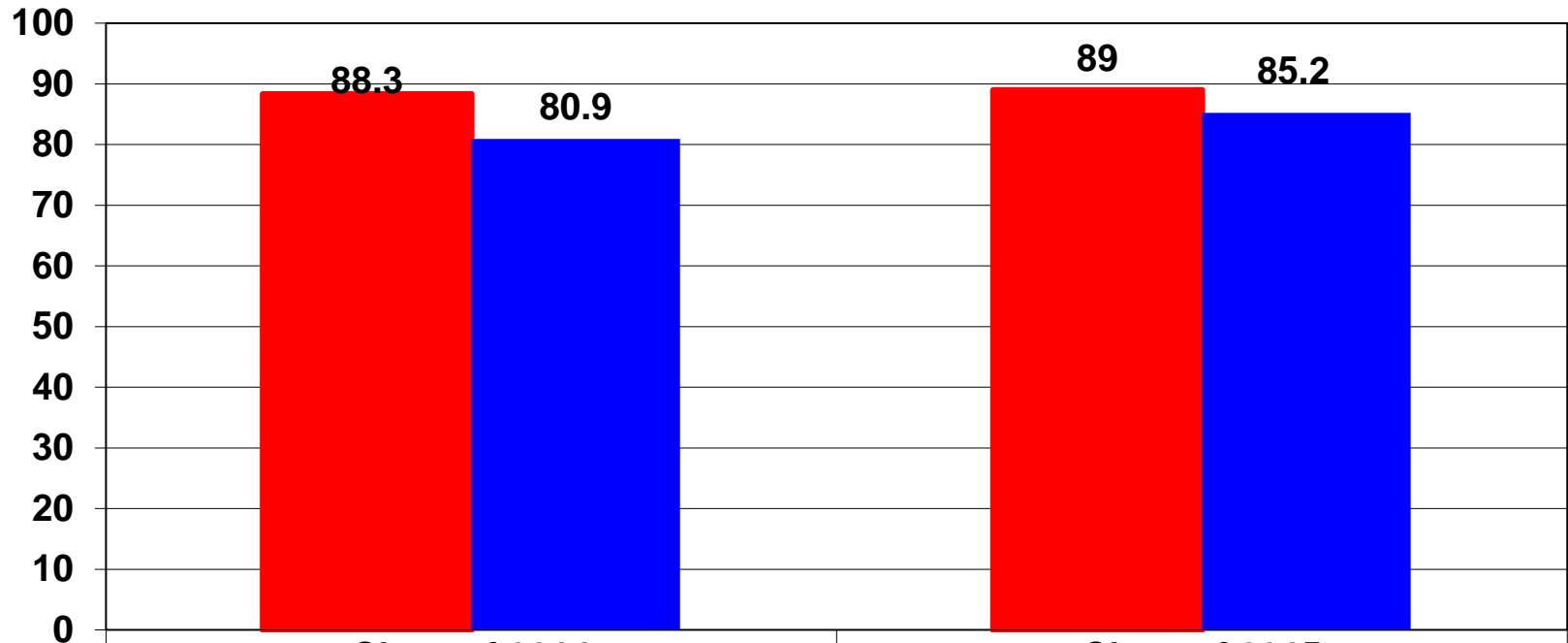
■ State 2016	91
■ CSCISD 2016	91
■ CSCISD 2015	87

Attendance Rate



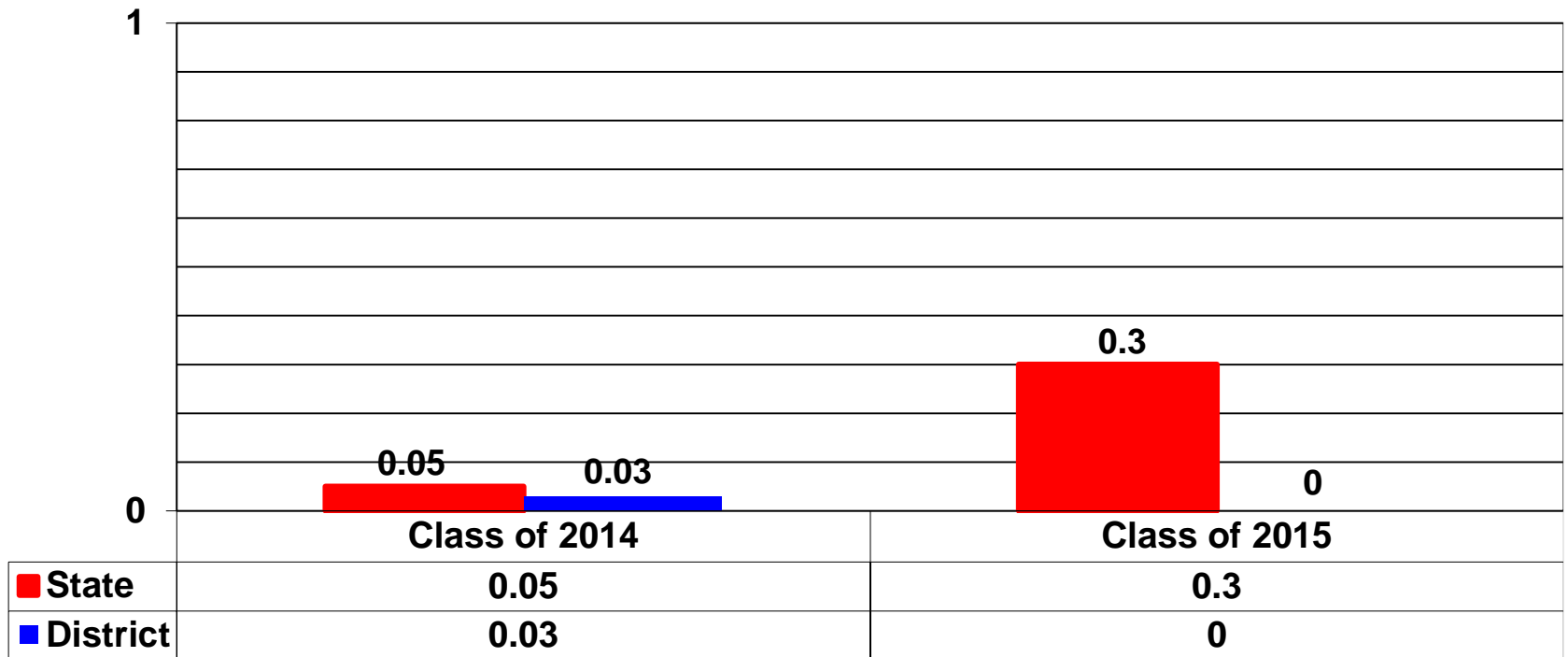
	2013-14	2014-2015
State	95.9	95.7
District	94.2	93.9

4 yr. Federal Graduation Rate w/o Exclusions (9-12)



	Class of 2014	Class of 2015
State	88.3	89
District	80.9	85.2

Annual Dropout Rate (Gr 7-8)



Annual Dropout Rate (Gr 9-12)



■ State

2.2

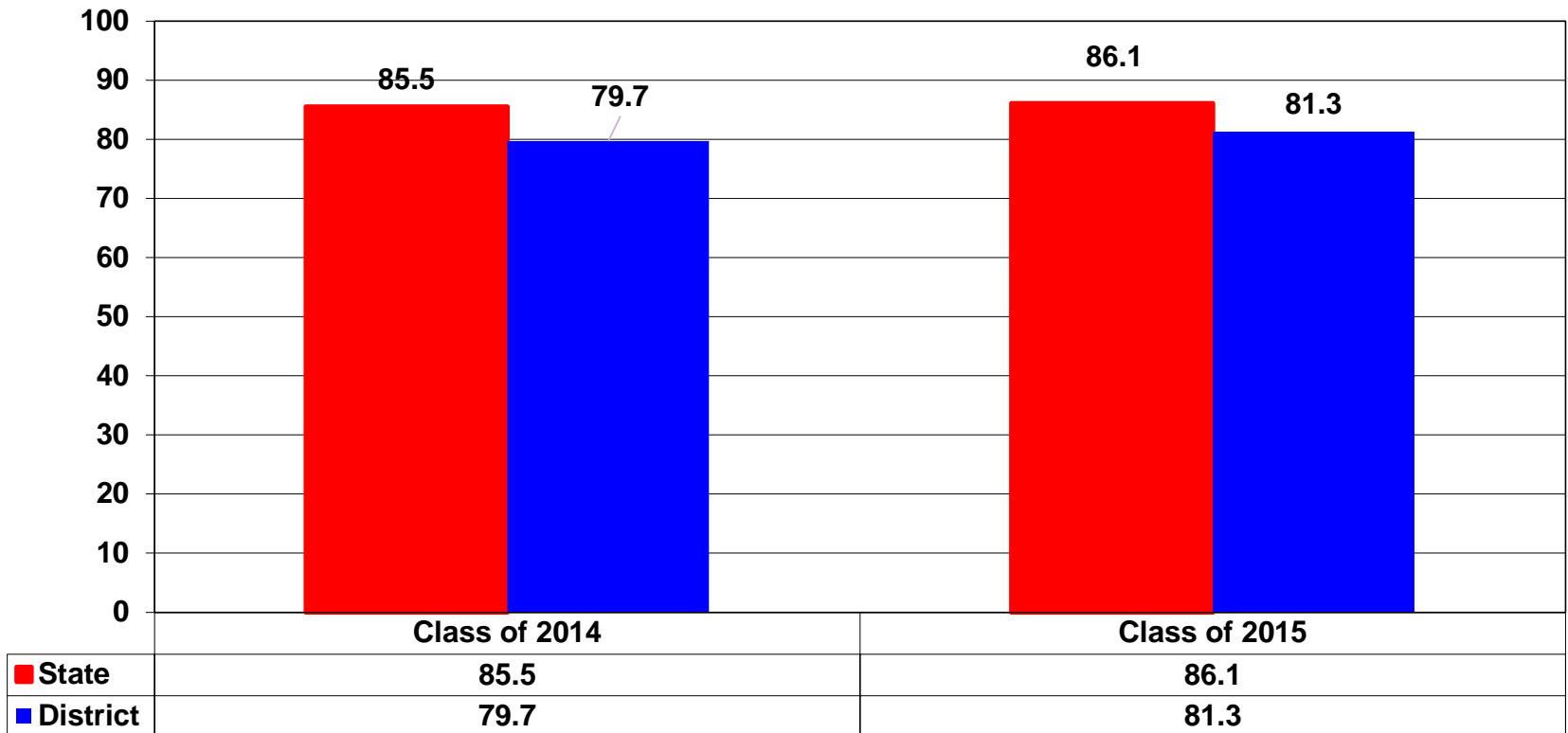
2.1

■ District

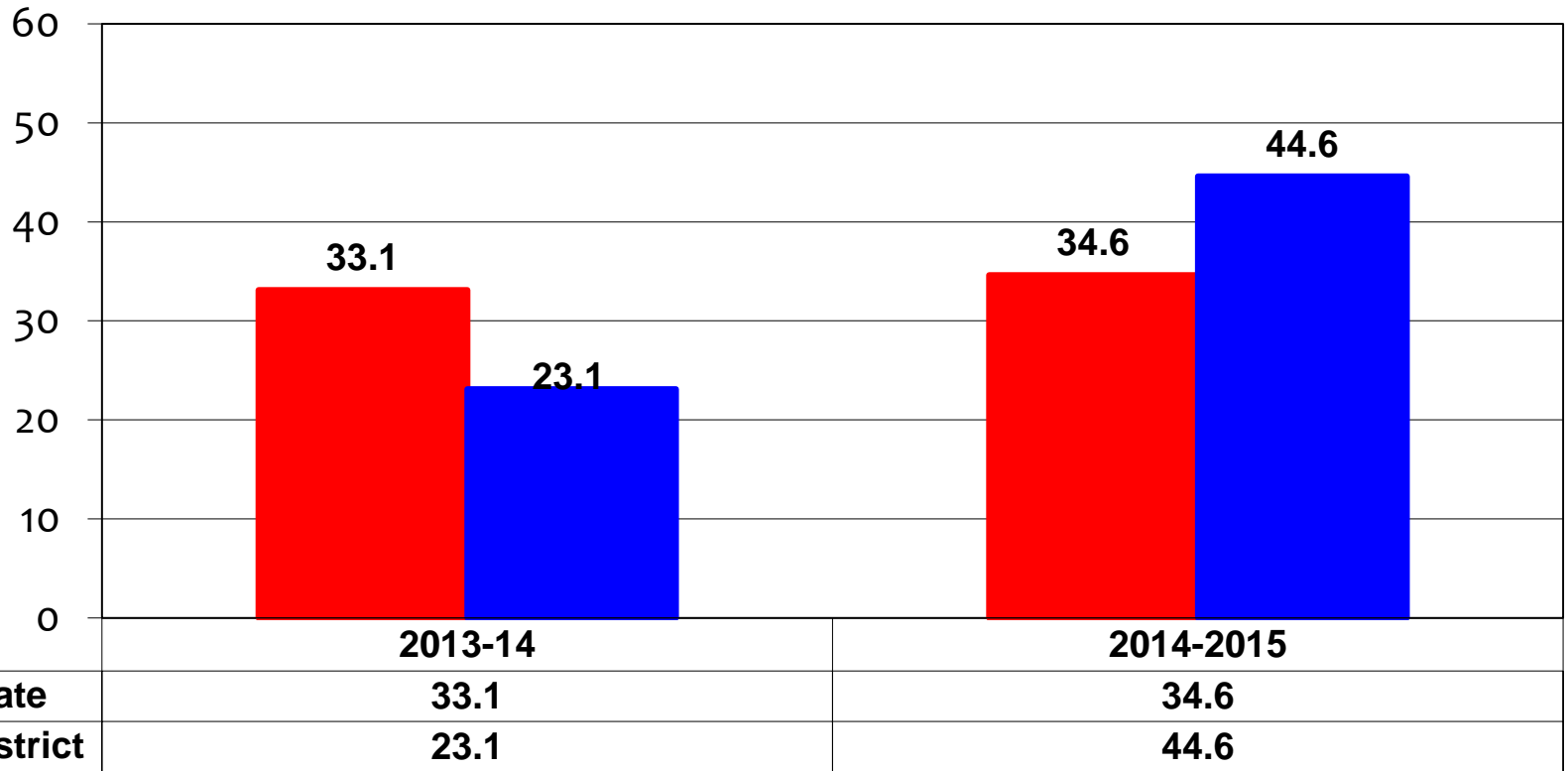
3.4

4.6

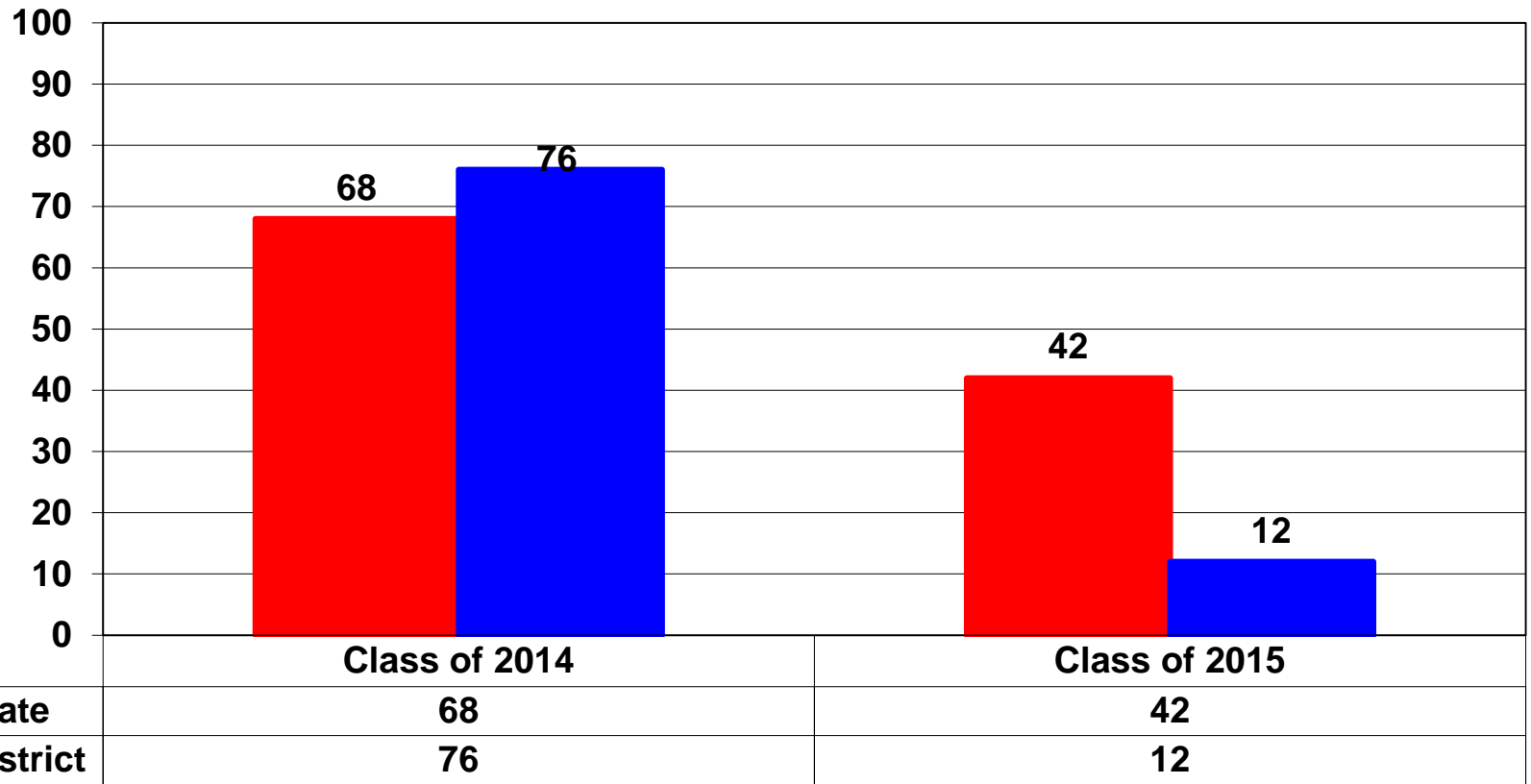
Recommended HS Program (RHSP/DAP) Graduates (Longitudinal Rate)



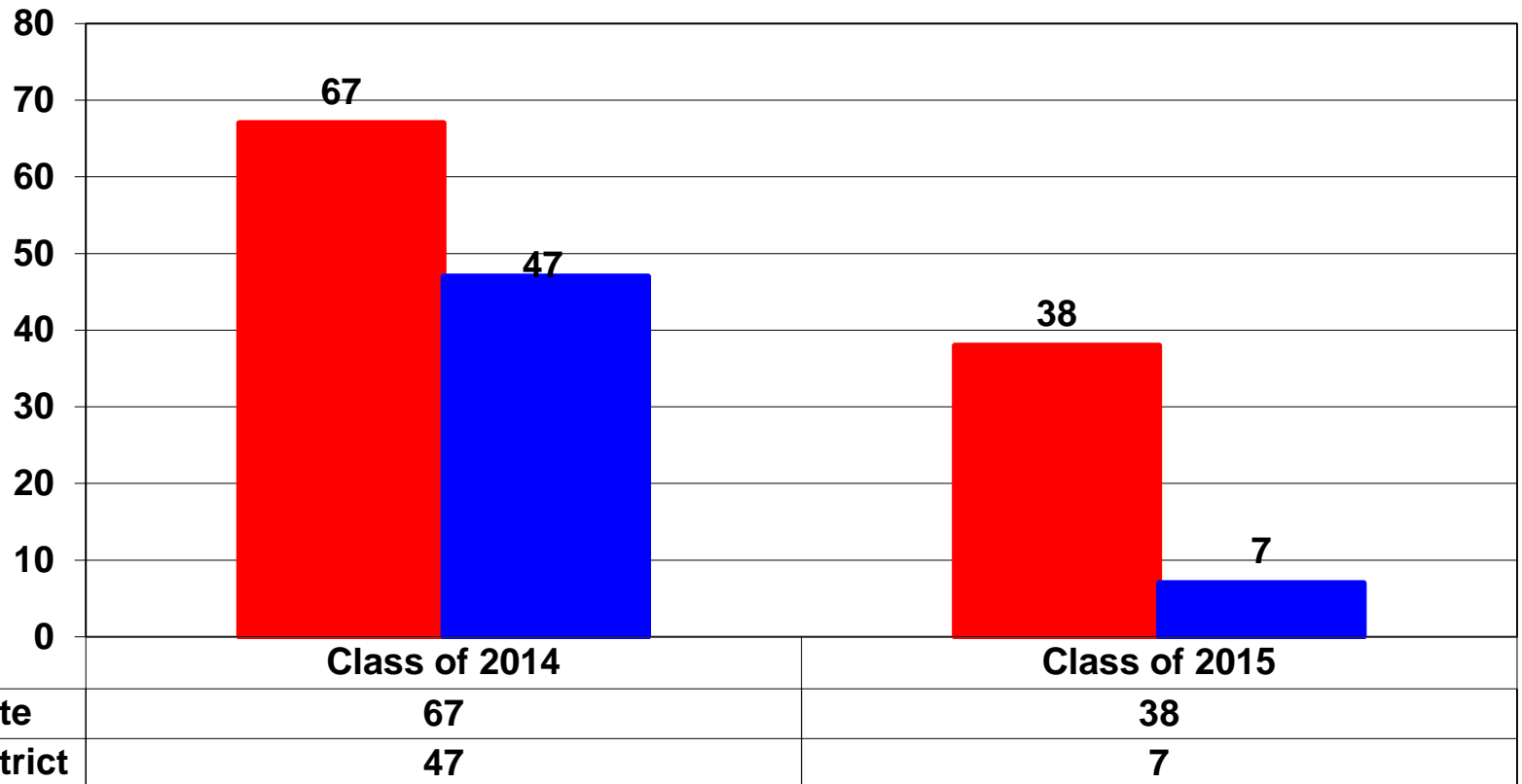
Advanced Course/Dual Credit Course Completion (any subject - Gr. 9-12)



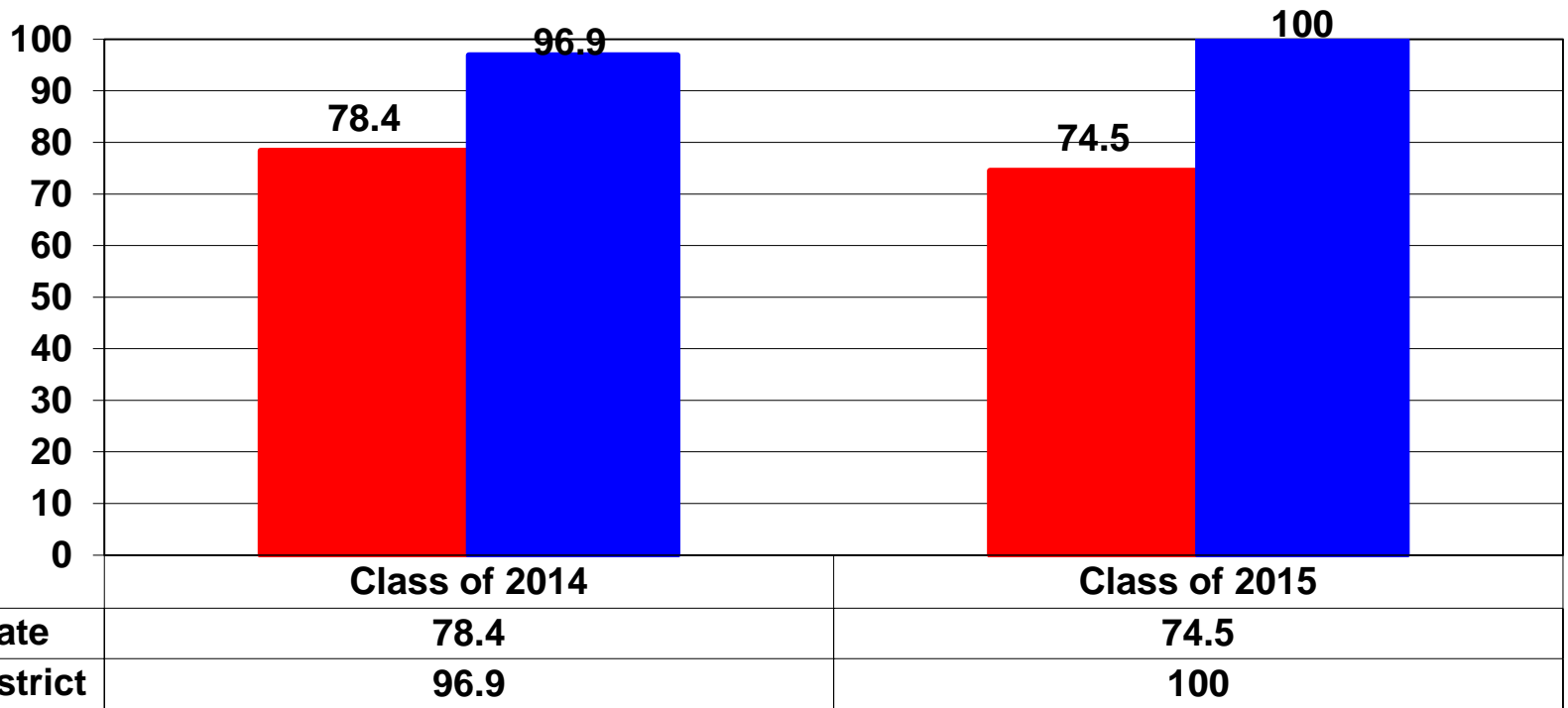
College Ready Graduates – ELA



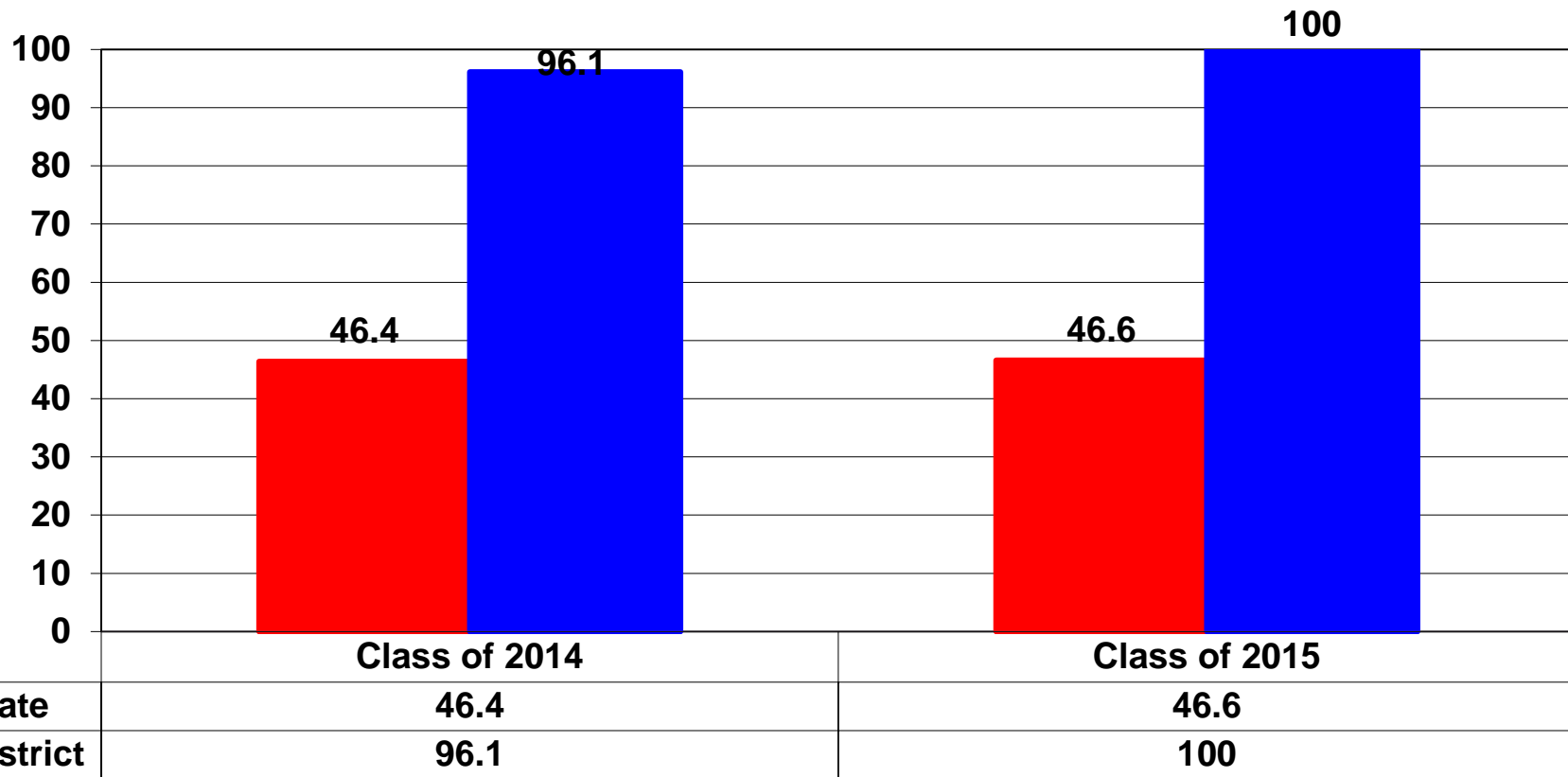
College Ready Graduates - Math



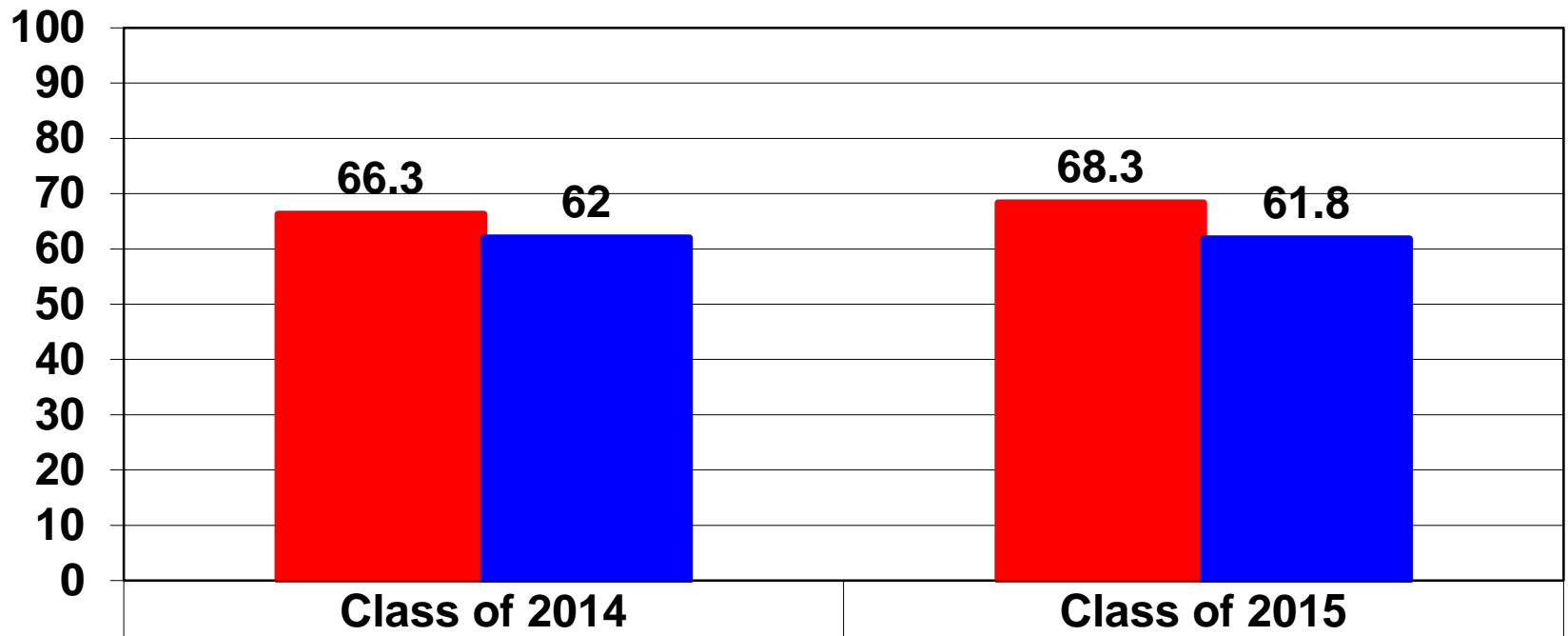
College and Career Ready Graduates



CTE Coherent Sequence Graduates

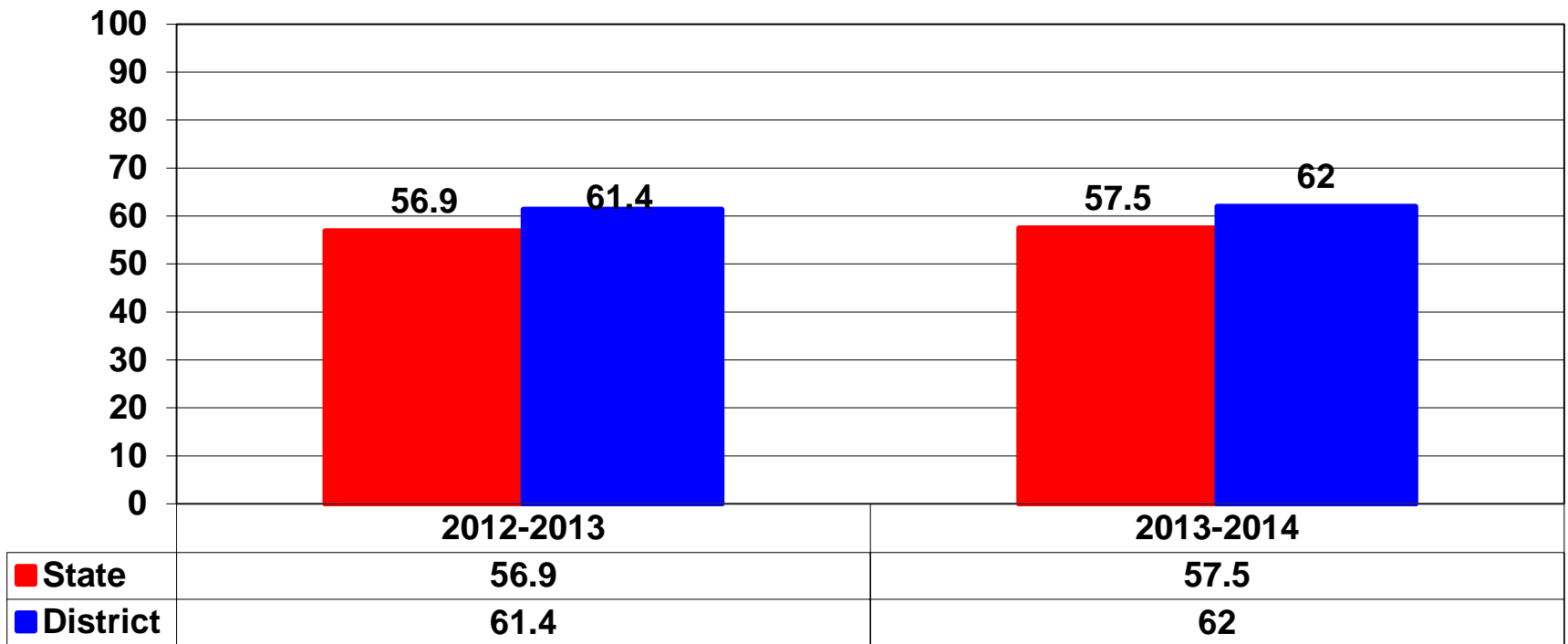



SAT/ACT Results Tested



■ State	66.3	68.3
■ District	62	61.8

Graduates Enrolled in Texas Institution of Higher Education





The Texas Academic Performance Reports (TAPR)
may be found at the following link.

<https://rptsvr1.tea.texas.gov/perfreport/tapr/index.html>